



SDV Contribution Day Project Ecosystem

2022.09.22



Continental

1,173,114 followers

View full page

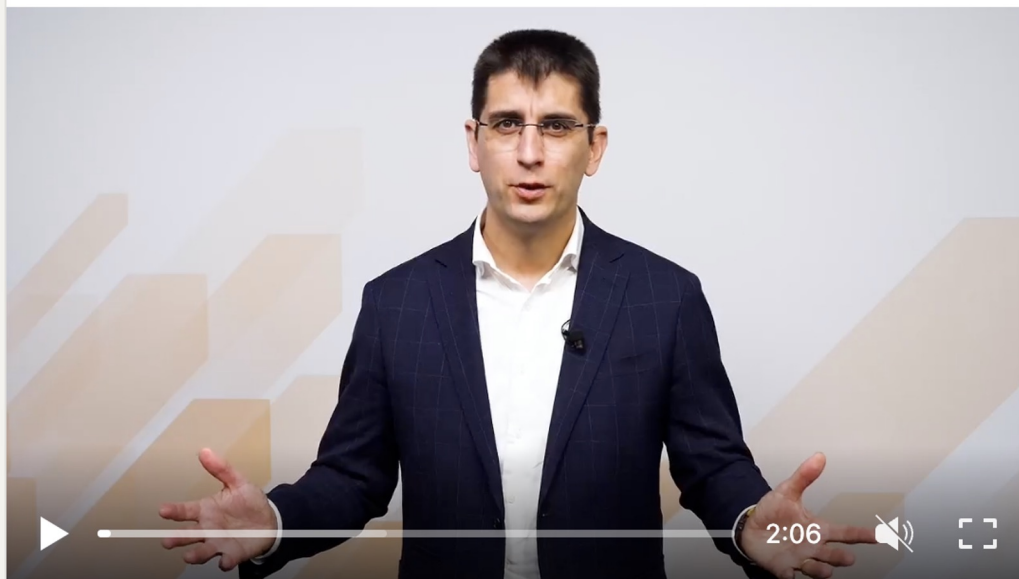


Continental

1,173,114 followers

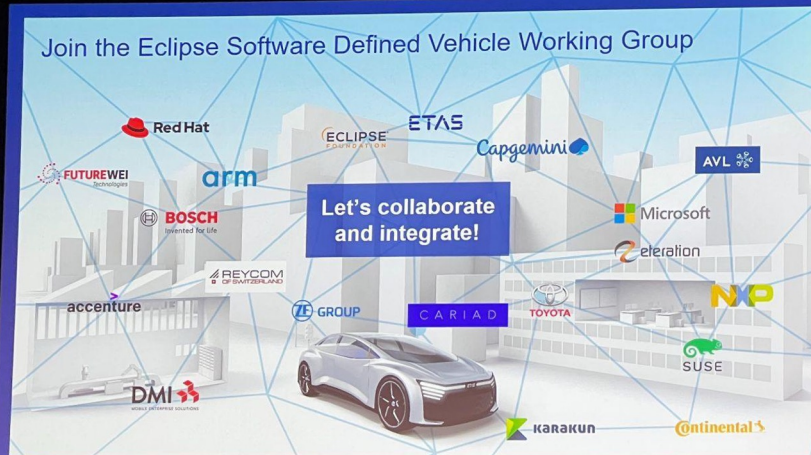
1mo · Edited ·

We put software at the top of our growth agenda. This is why Continental works closely together with others, connected, and values combining Hardware & Software knowledge. We can only do this together. Listen to our CTO Automotive **Gilles MABIRE** explain why joining forces with the EclipseFdn matters to Continental. [#SoftwareDefinedVehicle](#) [#software](#) [#automotive](#)



Christoph Herzog and 429 others

9 comments · 13 shares





New Value Creation Options: From Buy & Manage to Make & Collaborate

Buy

- **Debundling** of ECU + SW
- SW – **Containerization**
- HW – **EMS**
- 1st tiers **mirroring** OEMs
- OEMs **competing** 1st tiers

Make

- **Talent**
- **Talent**
- **Talent**
- **Focus**
- **Reality check**

Collaborate & Contribute

- **Decide** to trust
- **Follow** instead of control
- **Share** loads & resources
- Increase **Quality**
- **Mindset Challenge**

ECLIPSE
FOUNDATION

arm AVL IS Capgemini

DMI ETAS

NXP

BOSCH SUSE

How many
platforms are
sustainable?

Copyright © 2022 Accenture. All rights reserved. 15

Eclipse SDV – Working Group Mission and Strategy

Provide a forum for individuals and organizations to build and promote **open-source software**, specifications, and open collaboration models needed to create a scalable, modular, extensible, industry-ready open-source licensed vehicle **software platform to support in-vehicle and around the vehicle applications development and deployment.**

It is the intent of the Working Group to support a **'code first' approach** to solving problems together.

Support for open-source projects

- provide guidance for new emerging projects
- provide tooling and infrastructure support for new projects

Align innovations based on industry needs

- observe and drive industry trends
- make Security a "Day Zero" Priority

Thought Leadership

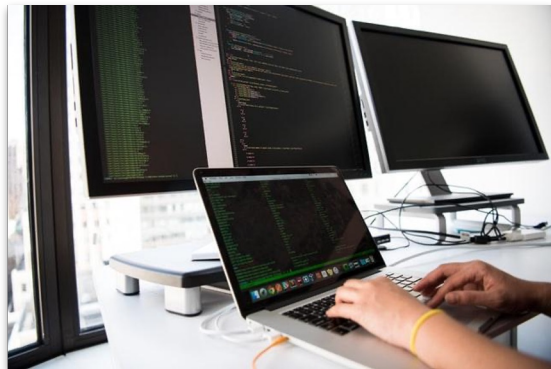
- pro-actively talk about challenges, solution and market trends
- Provide a smooth onboarding experience for users of open-source projects

Community Building

- Facilitate community events to foster exchange between members
- Grow the community and increase memberships

Projects and Working Groups

Projects



Group of committers

Build code, specification documents, documentation

Transparent
Open
Vendor-neutral



Working Groups



Group of organizations

Focus, promote and augment Eclipse technologies
Open Governance

Eclipse Foundation Working Groups

Foundation in a box



Vendor-Neutral Governance

Collaboration under a vendor neutral governance model



Ecosystem Development and Marketing

Eclipse Foundation staff help build a community for collaboration through marketing and community programs



Collaborative Management

Working groups coordinate the efforts of open source projects by providing a shared vision and roadmap



Specification Development

Eclipse Working Groups use the proven Eclipse Specification Development processes that provides a framework for the development of specifications in open source



Branding and Compatibility

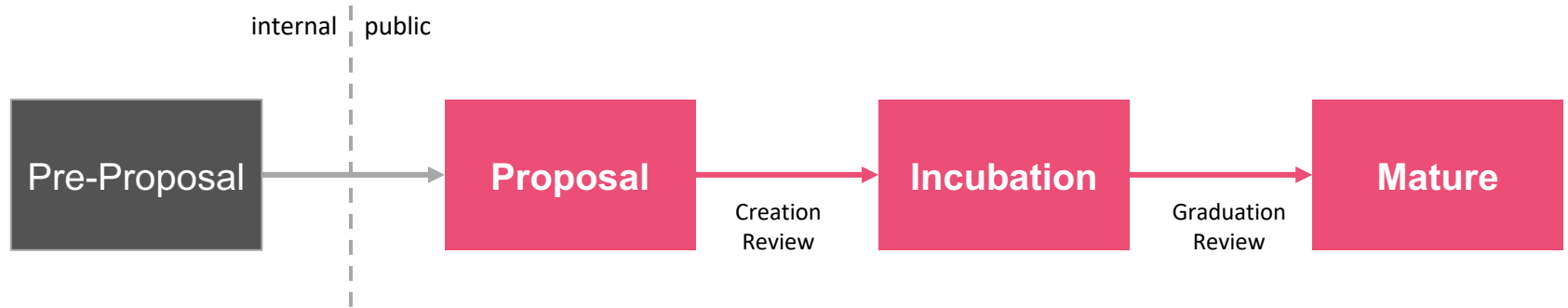
Creating branding and compatibility programs to build a trusted ecosystem of implementers and consumers

Relationship between Projects and Working Groups

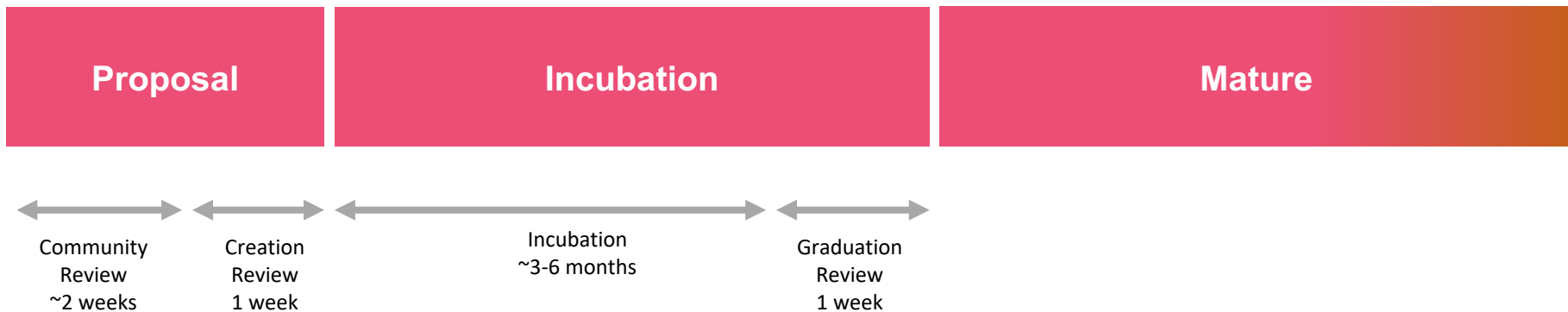
- There is no notion of Working Group ownership of Projects
 - Working Groups are intended to *complement* open source projects by undertaking activities that open source projects are not well suited for
- Working Groups express non-exclusive interest in Projects
 - Specification Projects are automatically included in the Working Group's project set
- The union of the Committers from a Working Group's Projects comprise the Working Group Committers

The Projects
What's next

Project Phases

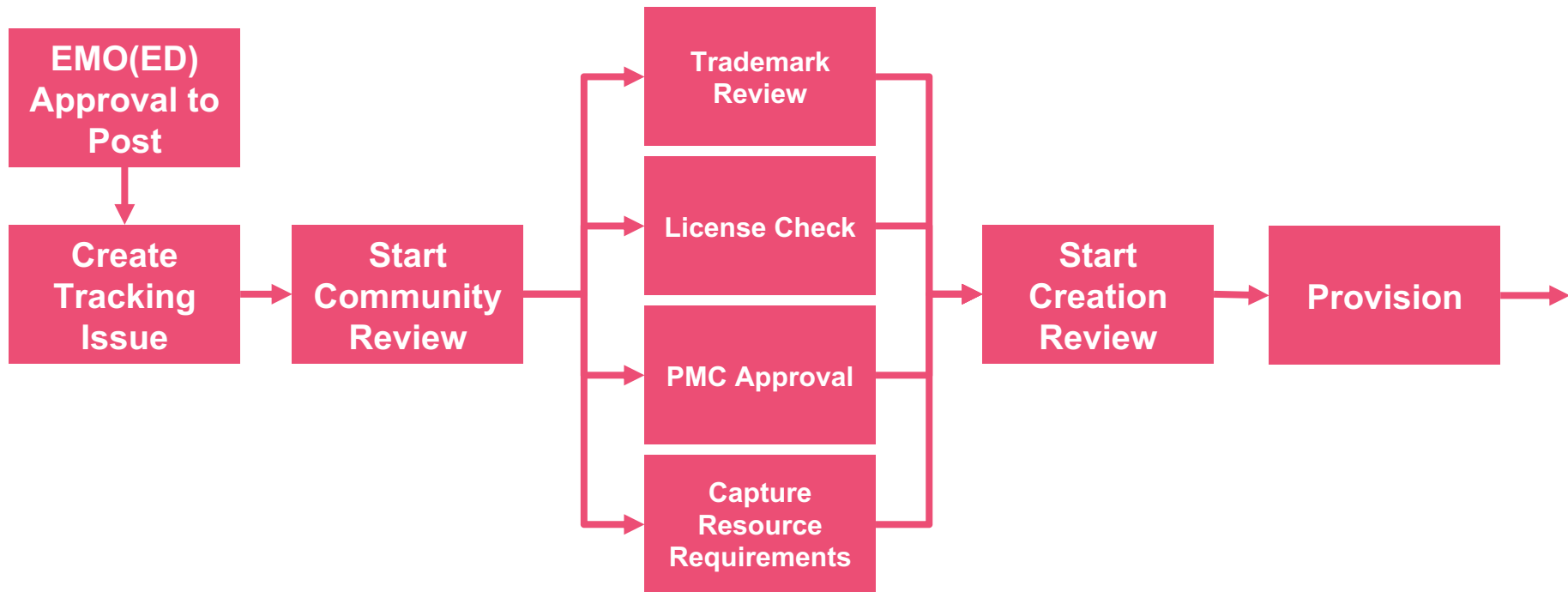


Eclipse Open Source Project Timeline



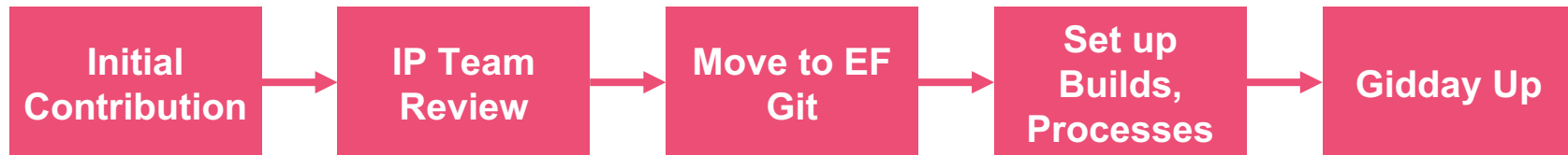
*Not to scale

Tracking the Proposal



<https://gitlab.eclipse.org/eclipsefdn/emo-team/emo/-/issues>

What's Next



Resources

- Eclipse Foundation Project Handbook
 - <https://www.eclipse.org/projects/handbook>
- Eclipse Foundation Committer Training
 - <https://www.eclipse.org/projects/training>
- “Incubation” Mailing List
 - <https://accounts.eclipse.org/mailling-list/incubation>
- Eclipse Management Organization (EMO)
 - emo@eclipse-foundation.org

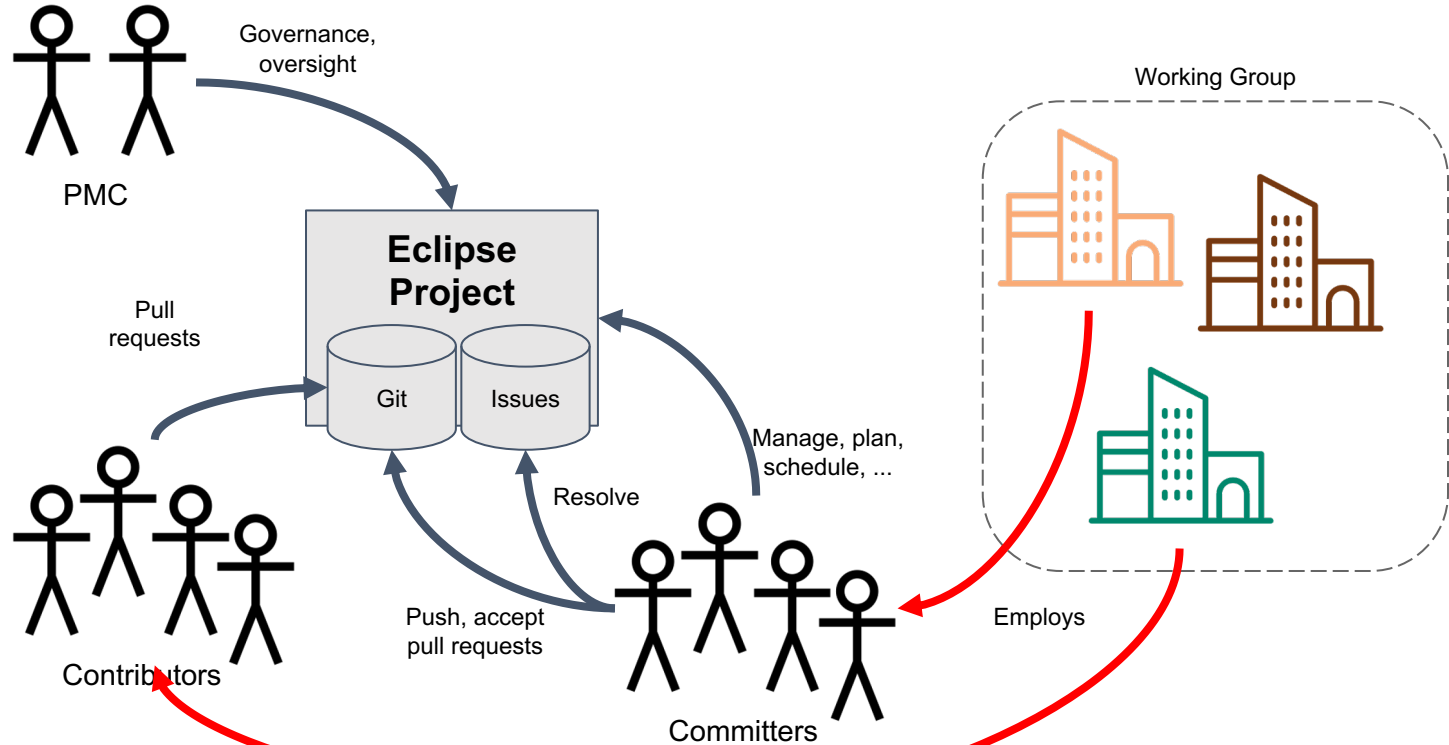
The Projects

How to engage

Governance principles



Who's Who?



Becoming a Committer

Meritocracy by contribution

- Committer status is not automatic
- Establish a pattern of contribution
- Committer nominates

Committer Election

- Define trust;
- Maintain vendor/employer neutrality; and
- Operate transparently

COMMITTER TOOLS

The following commands are available to project committers:

Elections

- [Nominate a Committer](#)
- [Nominate a Project Lead](#)

Intellectual Property

- [Create a Contribution Questionnaire](#)
- [Generate IP Log](#)
- [Contribution Questionnaires](#)

Communication

- [PMC Mailing list](#)
- [Send Email to the PMC...](#)
- [Send Email to the Dev List...](#)

Documentation

- [Legal Documentation Generator](#)

Releases

- [Create a new release](#)



THANK YOU

