

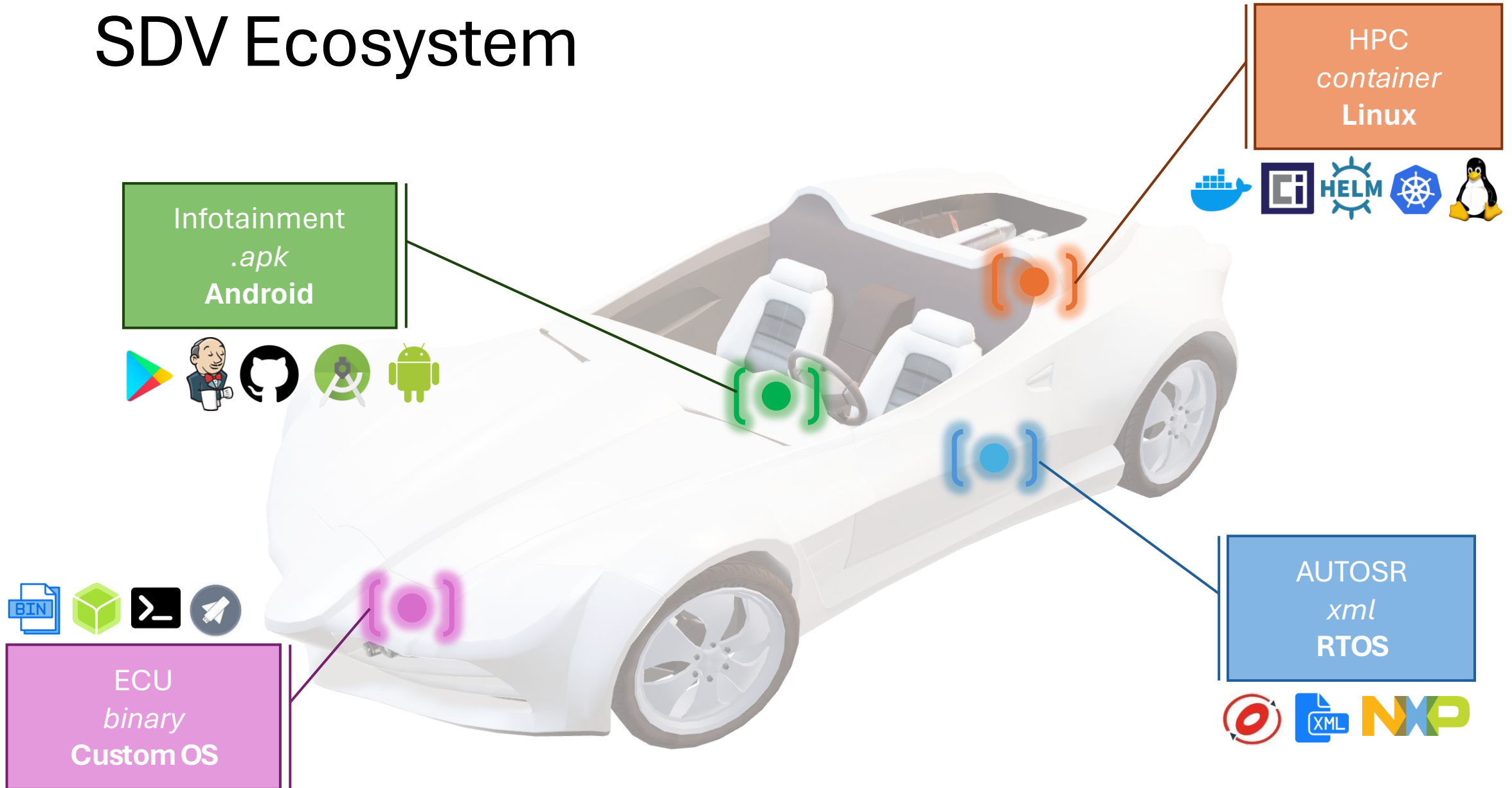
Symphony

2024

Problem

- Orchestrate multiple toolchains
 - Different vendors at different times
 - Diverse workforce knowledge base and capabilities
 - Mixture of different deployments and versions

SDV Ecosystem



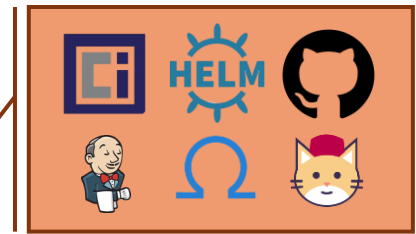
Manufacture



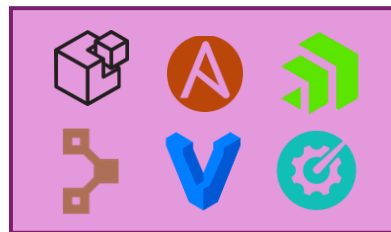
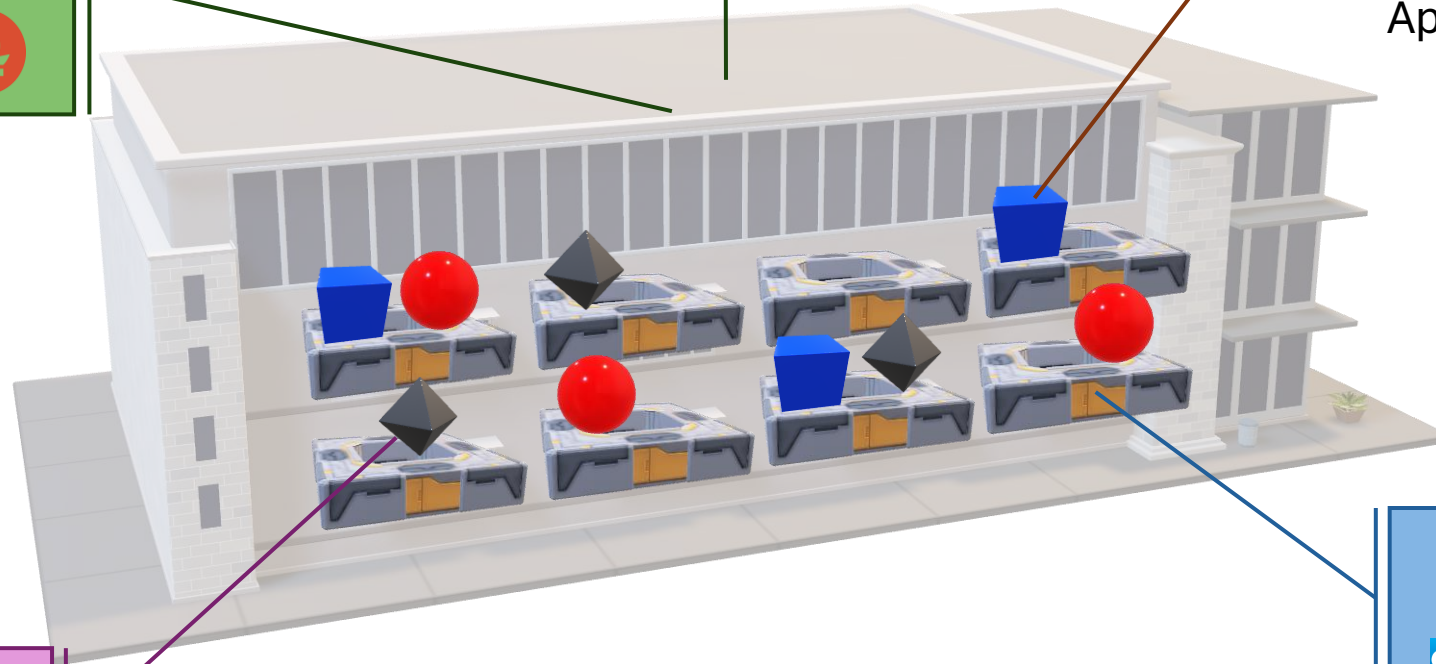
Policy
Security
Observability
...



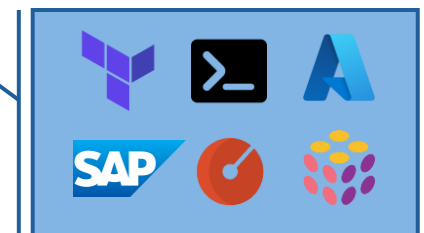
Big Data
Analysis
AI
...



Applications

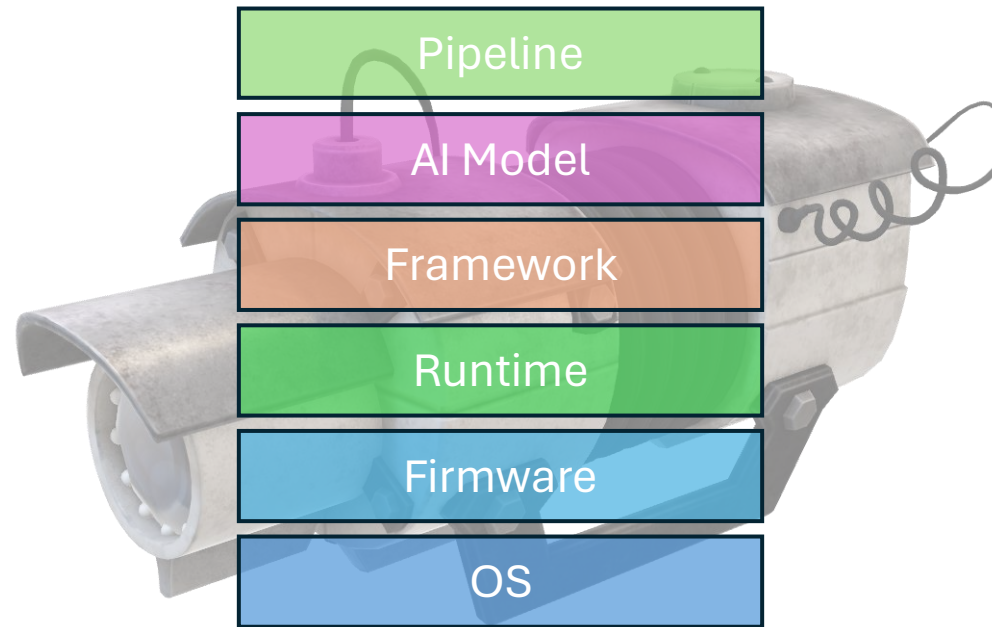


Configurations



IaC

Edge AI



How do we build an **end-to-end, consistent edge experience**
out of this heterogenous, dynamic landscape?

(without losing our minds)

Roads to unification



Laws & regulations

Specifications
Standards



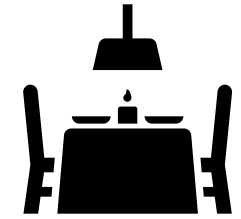
Fast-food chain

Full-stack



Food court

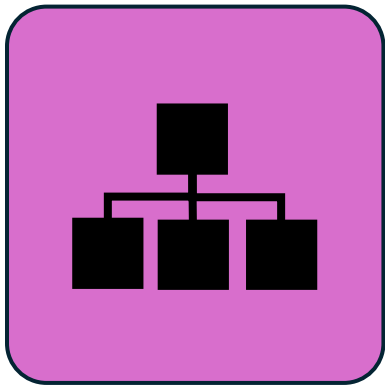
- Unified experience
- Embraces diversity
- Embraces dynamism



Fine dining

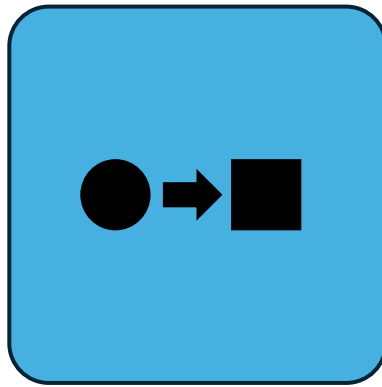
Deep engagement

Symphony abstractions



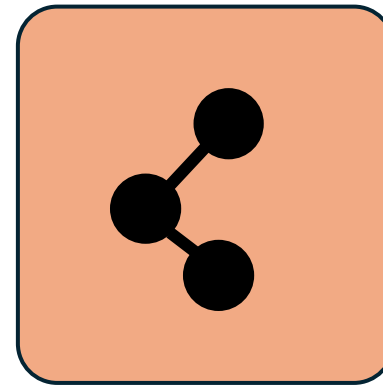
orchestration model

model orchestration problems
* as code
application topologies
device capabilities
AI pipelines



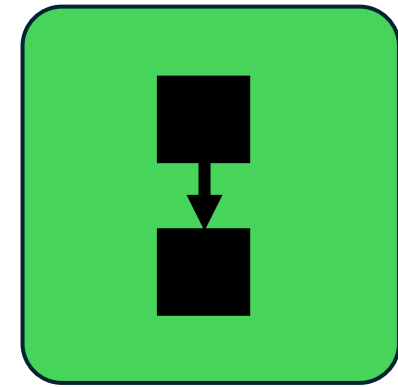
state seeking

deployment
update
configuration
policy
sidecar injection



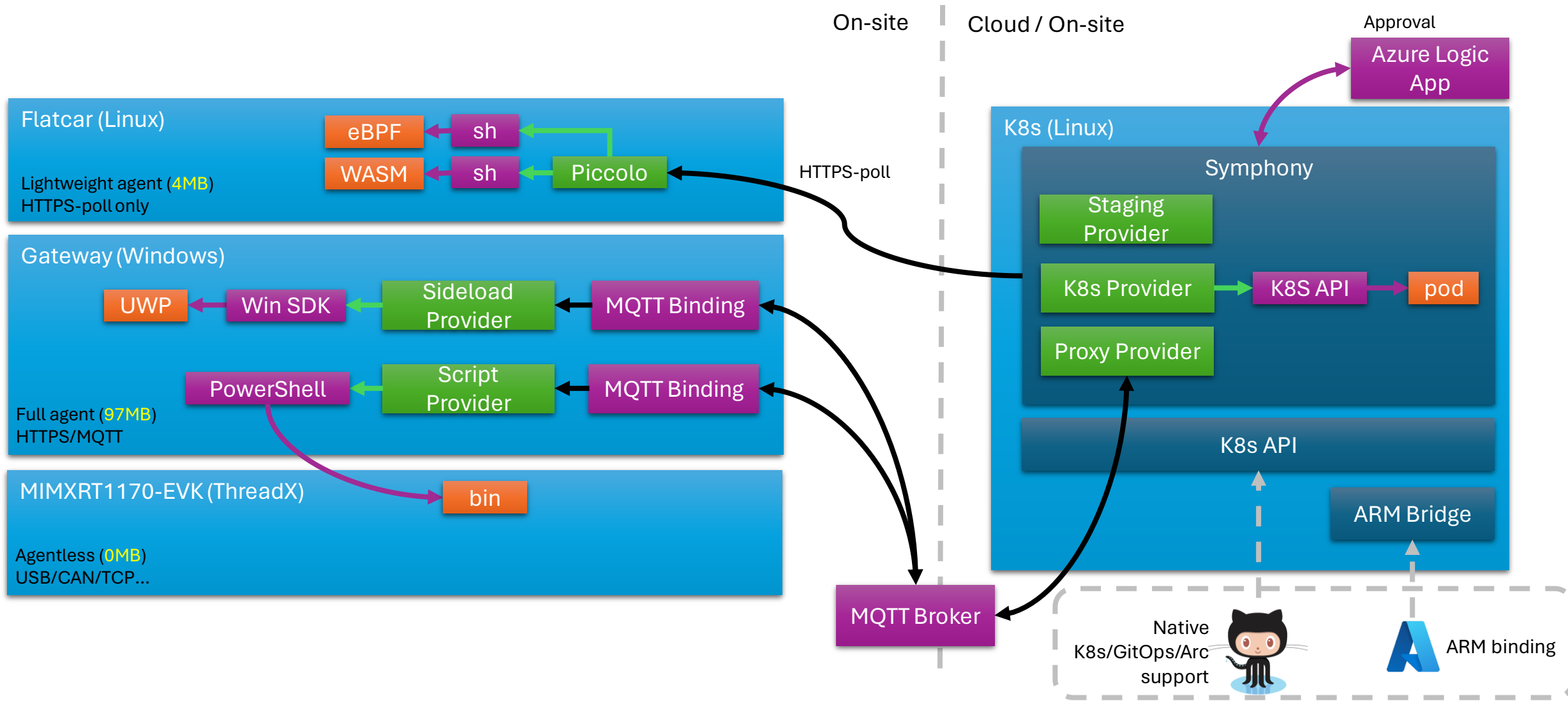
information graph

asset management
configuration management
templating
status report
analysis



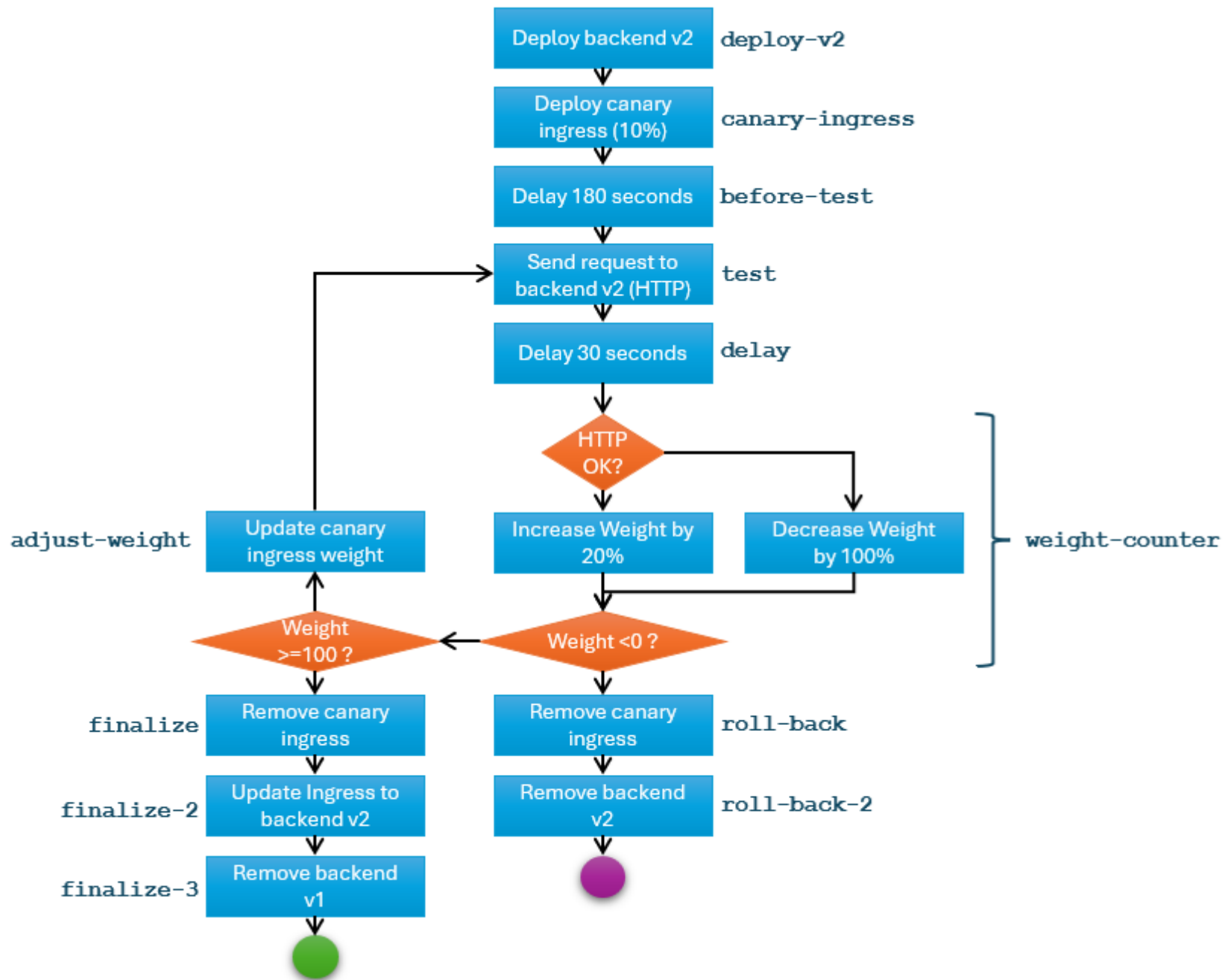
workflow

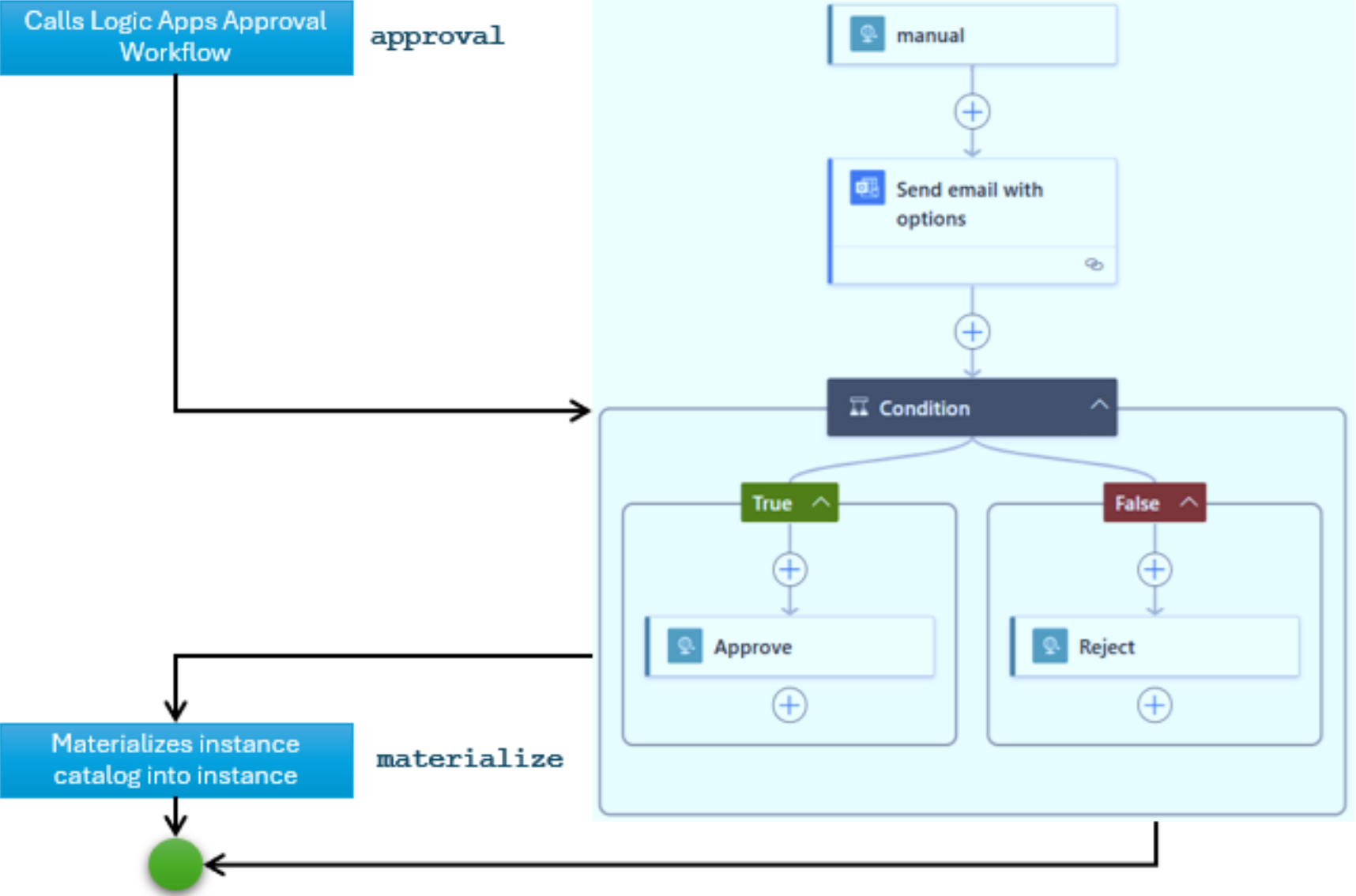
approval
scheduled deployment
canary
CI/CD integration
multi-site coordination

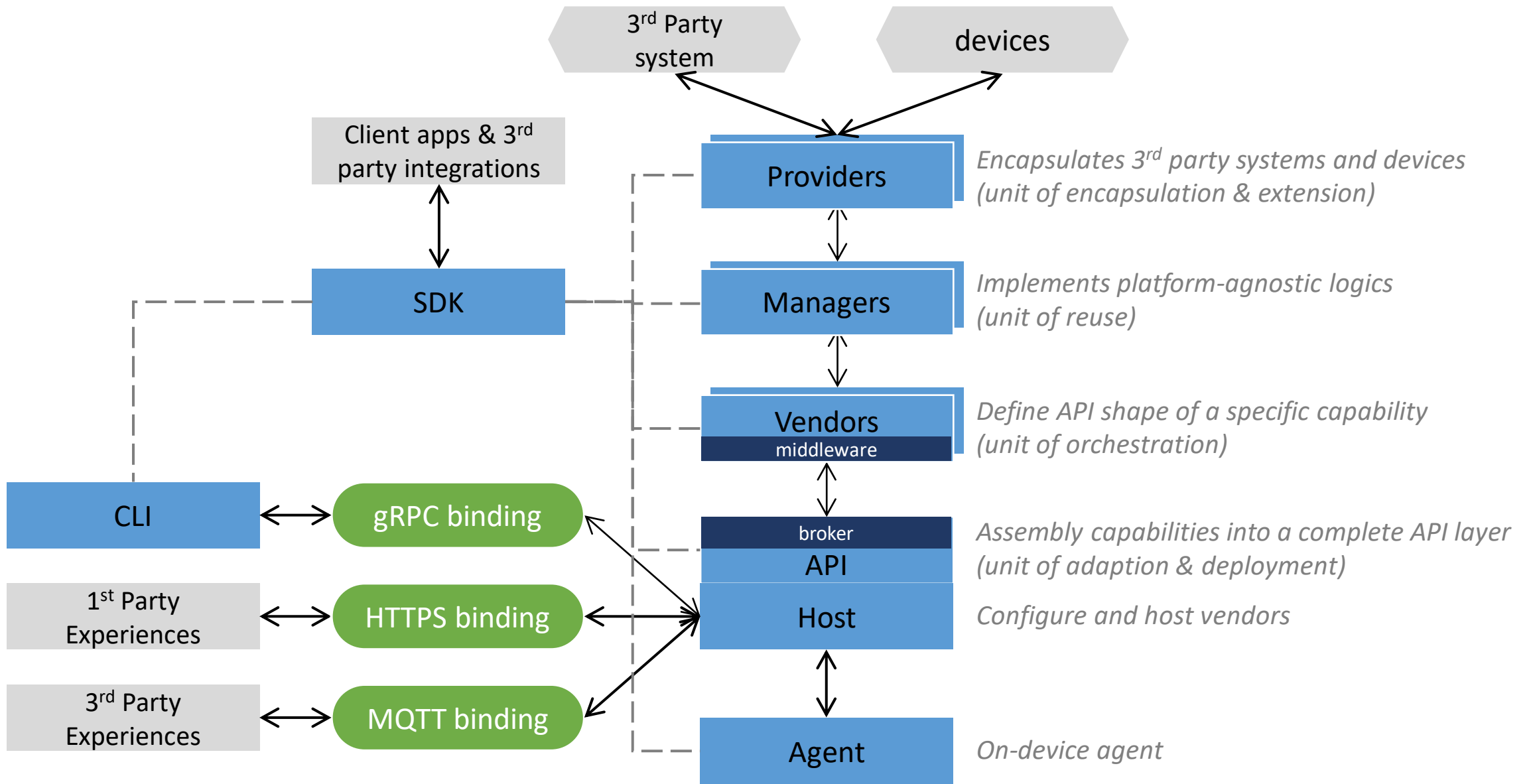


Facts

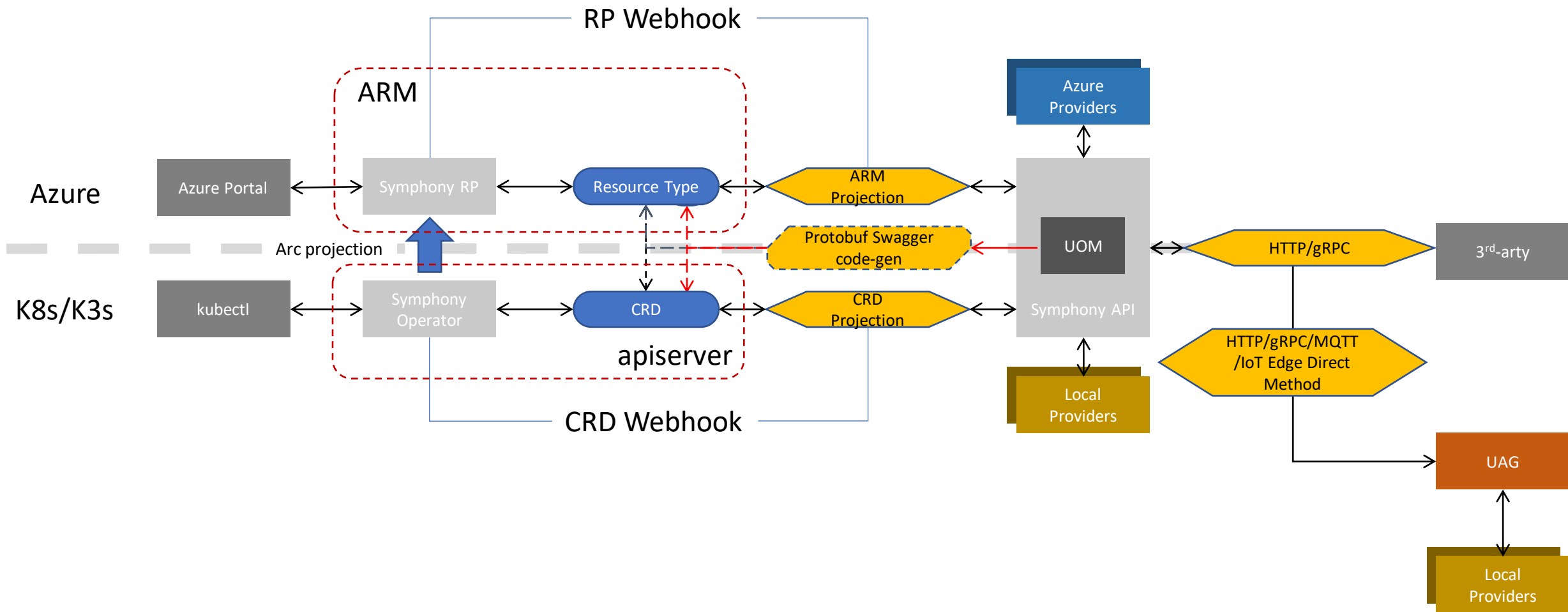
- Eclipse open-source project under MIT license (0.48.2)
- Platform agnostic and extensible
- Standalone or Kubernetes
- Agentless (0MB), light agent (4MB) or full agent (97MB)







Architecture



CLI Portal Script CI/CD K8s Binding

Symphony API

Protocol binding - HTTPS, MQTT, others

Middleware – observability, authn, billing

Solutions application management	Targets infrastructure management	Instances deployment management	Catalogs configuration templates ontologies indexes	Campaigns workflows approvals gated updates canary CI/CD scheduled fan-out policies	Devices sensors cameras actuators ECUs SoCs accessories	Models AI models	Skills AI pipelines data pipelines	Trails immutable log	Jobs remote tasks clean up ingestion async ops	Federation sync multi-site graph queries	Settings sys config contexts	Solution agent state-seeking	Hydra ingestion projection import export
--	---	---	---	---	---	----------------------------	--	--------------------------------	--	--	--	--	--

Managers – platform-agnostic business logic

Providers – integration/extension points to connect to external tool chains

